

WELCOME TO THE BVI

What to expect on arrival at Terrance B. Lettsome International Airport

- 1 ARRIVAL/DAY 0**
Enter Welcome Centre
- 2 TESTING**
Traveller will enter screening from Port Health Officials for sanitisation, temperature check and a PCR test
- 3 EXIT**
Exit Welcome Centre
- 4 IMMIGRATION**
Traveller will then proceed to Immigration to present their travel documents
- 5 CUSTOMS**
Head to Customs to pay the Environmental Levy and declare any goods
- 6 DISPATCH**
Provide dispatcher with accommodation details
- 7 TECHNOLOGY**
Receive a monitoring device best suited for your specific accommodations
- 8 GOVERNMENT APPROVED DISPATCH TRANSPORTATION**
Visitor is dispatched to their accommodations via an approved Gold Seal Certified Transportation

*NOTES

- * The Welcome Centre is outfitted with a lounge, testing stations, isolation room, donning and doffing rooms, restrooms, etc.
- Passengers will be accommodated in vehicles based on COVID-19 social distancing protocols.
- Families may be transported in groups.
- Social distancing protocols will be adhered to during transportation of visitors.
- All approved transportation will be identified by a Gold Seal Certificate on the windshield.
- Persons will be required to sanitise before entering vehicle.
- Masks should be worn throughout the duration of the trip.

DAY 4 PCR TESTING

SCHEDULE

IF YOU'RE STAYING ON:	PICK UP IS:
Western Tortola	8:00 A.M. Onwards
Road Town and Central	9:00 A.M. Onwards
Eastern Tortola	9:30 A.M.
Guana, Scrub and Buck Islands	8:15 A.M. From Trellis Bay Dock
Virgin Gorda (Including Rosewood Little Dix Bay)	9:30 A.M.
Virgin Gorda, North Sound area: Necker and Mosquito Islands, Oil Nut Bay, Eustatia and Bitter End	9:30 A.M. From Gun Creek Dock
Anegada Persons will be transported to Virgin Gorda for testing	Pick Up is at 8:15 A.M. For Departure At 8:45 A.M. 9:30 A.M. From Gun Creek Dock
Jost Van Dyke	8:30 A.M.
A Yacht	9:00 A.M. From Nanny Cay Marina *You may come alongside the dock starting at 8:00 A.M.

Please note that testing is conducted from 8:00 A.M. Until 1:00 P.M. daily

Wait for government approved transportation
DO NOT ARRANGE YOUR OWN TRANSPORTATION

OFFICIAL PROTOCOLS

UPON ARRIVAL

Upon arrival at the Terrance B. Lettsome International Airport, travellers will be directed to the BVI's "Welcome Centre" for the *Arrival Day/Day 0 RT-PCR test*

Prior to travelling onward to their approved accommodations, all visitors will be required to:

- Activate a tracking system on their phones (data or WiFi connectivity required)
- Wear a wristband monitoring device

WHILE IN BVI

- All arriving visitors are required to quarantine for four complete days at their hotel, resort, villa or on their vessel
- All visitors will receive another RT-PCR test on Day 4
- Children under 5 do not need to be tested
- If the results are negative, visitors will be allowed to move around the BVI freely

The Government of the Virgin Islands' current social distancing and safety measures apply.

COST FOR THE BVI's COVID-19 ENTRY PROCEDURES

There is a \$175 fee for each passenger.

This fee covers:

- RT-PCR test on Arrival Day/Day 0
- RT-PCR test on Day 4
- Tracking Bracelet rental
- Mobile App
- Other related necessary procedures

- Anyone who tests positive upon arrival or at any point must continue to quarantine at their respective location for a minimum of 10 days.
- Visitors must take Government approved transportation to their accommodations and testing sites which are located throughout the BVI.

WHILE IN BVI

Any visitor who tests positive at any stage after arrival will be quarantined in an approved location for a maximum of 14 days at their own expense.

PHASE III REOPENING

FAQ

QUARANTINE

How are quarantine days counted? When does day 1 of quarantine begin?

Your arrival day is Day 0. Then, you quarantine for four full days, Days 1-4. You then test on the morning of the fourth day of your quarantine. Once you receive a negative result from your Day 4 test, you are then free to move around the BVI and enjoy all we have to offer. You must adhere to all of our safety protocols.

Where will we be quarantined?

Quarantine will be conducted in a Government approved location. This might be your resort, your yacht, your home—any location that is already inspected and approved by the Government. The list of Government approved accommodations is constantly being updated.

Can I quarantine in my home? How do I arrange this?

Each traveller must answer a series of questions provided on the online portal BVIGATEWAY.BVIAA.COM. This will determine whether your request for home quarantine will be approved or denied.

For questions or concerns, telephone 284-468-5110 or email homequarantinebvi@hotmail.com.

For persons quarantining on yachts, email inspectionsehd2020@hotmail.com.

What are the related costs for residents to quarantine in a Government facility?

Government covers the cost of the quarantine facility and the resident traveller covers the cost of food and security. As of December 1st, security is handled through the monitoring bracelet or location device.

What are the related costs for visitors to quarantine in a Government facility?

Visitors must be able to cover quarantine expenses at any approved Government facility.

Can I select which Government Quarantine facility I go to?

No. At this time an approved quarantine facility will be selected by Government Officials for you to quarantine.

How long will I quarantine for if I test positive while in the BVI?

If you test positive you will be required to complete 14 days of quarantine in a Government approved location. If you have already completed four days of quarantine and this is your Day 4 test, your 14 days include the previous four days and you would have 10 further days of quarantine.

How soon can I be released from quarantine?

Once a negative PCR test result is received, persons will be released from quarantine.

TESTING

What are the types of tests? Are there rapid test kits? What is the turnaround time for testing?

In the BVI, the test that we recognise is the PCR Deep Nasal Swab Test. There is currently no Rapid Test Kits, or Rapid Testing that we have certified as sufficient for our needs at this time. The estimated turnaround time for your test results is currently 24 hours. If you take your test in the morning, the next morning your test results should be available.

If someone tests positive on arrival, would they be refused entry?

No, that person would enter medical quarantine for the next 14 days.

Do children have to be tested?

Children under the age of five do not have to take the PCR test. Children between five and ten would typically take a mouth swab, and children over 10 would typically take a deep nasal swab.

Where will I take my Day 4 test?

Please refer to the schedule listed in this document. You will be advised on where you will take your Day 4 test when your testing appointment is arranged.

How can I schedule a pre-departure test?

You can schedule testing when you are given your Day 4 testing appointment by the Ministry Of Health.



SCAN FOR MORE INFORMATION
AND RESOURCES

TRACKING DEVICES

Return Tracking Devices To Police Stations in the Territory

Persons who have received their **Day 4** negative PCR test result are required to return the tracking device along with the bracelet issued, to any Police Station in the Territory.

Persons are asked to contact their charter company or hotel/resort for assistance.

Any questions can be emailed to:
reopening@bvitourism.com, bvigateway@bviala.com
or sent via WhatsApp (*messages only*) to 284-496-6129



FINES AND PENALTIES

The Government of the Virgin Islands has recently instituted a number of fines and penalties and expanded the categories of officers designated to administer tickets. Public Health Officers have been included in the categories of officers who can issue fixed penalty tickets.

The following fines have been approved by Cabinet and passed in the House of Assembly including:

- 1** A person who tampers with or damages a geo-fencing/tracking device will incur a fine of \$2,000.
- 2** A person who visits anyone in quarantine will be fined \$5,000.
- 3** A person who contravenes the protocols or guidelines under these regulations will incur a fine of \$10,000.
- 4** A person who refuses to return a geo-fencing/tracking device or approved monitoring device will be fined \$5,500.
- 5** A person who provides false information when submitting an application for entry into the Territory; or to a designated Public Health Officer enforcing a quarantine order, will incur a fine of \$5,000.

All fixed penalty tickets must be paid at the Magistrate's Court within 21 days or before the person who has been issued the fixed penalty is scheduled to leave the Territory.

NEED MORE INFORMATION?

WhatsApp 284-496-6129
or Email reopening@bvitourism.com
or bvigateway@bviala.com



SCAN FOR FOR A DIGITAL
VERSION OF THIS GUIDE

VISITORS ON VESSELS

WHAT BOATERS AND CHARTER COMPANIES SHOULD KNOW

To pre-approve a private vessel for Quarantine
Telephone: 284-468-5110 or
Email: inspectionsehd2020@hotmail.com

VESSEL GUESTS

- All travellers to the Territory must enter a quarantine period of four complete days. Day 1 starts the following day after your Arrival Day/Day 0.
- Once the Arrival Day/Day 0 test has been conducted, travellers quarantining on vessels may proceed to any of the approved mooring sites for the mandatory four complete days of quarantine.
- Guests are restricted from landing at any site until they have received a negative Arrival Day/Day 0 PCR Test result.

VESSEL RESTRICTIONS

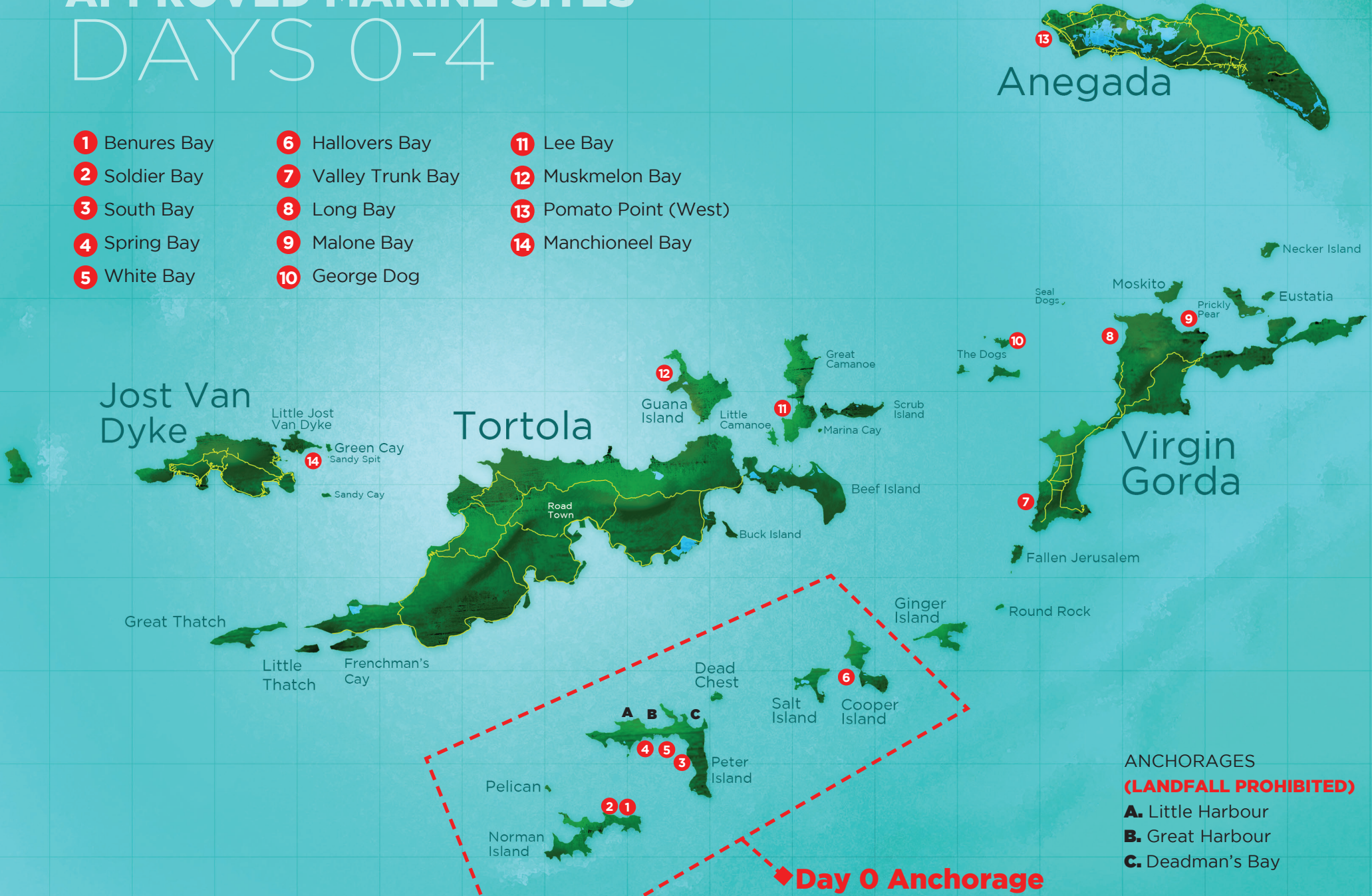
- Vessels are allowed restricted movement in the Territorial waters to the various approved quarantine mooring sites.
- Mooring sites include Benures Bay, Soldier Bay, South Bay, Spring Bay, White Bay, Hallovers Bay, Valley Trunk Bay, Long Bay, Malone Bay, George Dog, Lee Bay, Muskmelon Bay, Pomato Point (West) and Manchioneel Bay.
- Little Harbour, Great Harbour and Deadman's Bay are designated as overnight anchorages only. You are not permitted to go ashore to these sites during your quarantine.
- The vessel, guests, and the 30 foot radius around the vessel is your "mobile bubble." Guests may swim and enjoy our territory within the specified 30 foot radius of the vessel.
- Dinghies should be used to transport persons from their vessel to the shore. The 30-foot radius rule does not apply to dinghies.

VESSEL ALLOWANCES

- Vessels must be provisioned before guests arrive and board.
- All vessels must be anchored or docked by 6:00 p.m. daily at an approved mooring site until 5:00 a.m. the next day.

APPROVED MARINE SITES
DAYS 0-4

- | | | |
|---------------|--------------------|------------------------|
| 1 Benures Bay | 6 Hallovers Bay | 11 Lee Bay |
| 2 Soldier Bay | 7 Valley Trunk Bay | 12 Muskmelon Bay |
| 3 South Bay | 8 Long Bay | 13 Pomato Point (West) |
| 4 Spring Bay | 9 Malone Bay | 14 Manchioneel Bay |
| 5 White Bay | 10 George Dog | |



ANCHORAGES
(LANDFALL PROHIBITED)
A. Little Harbour
B. Great Harbour
C. Deadman's Bay

Updated on 11 December 2020 | NOT VALID FOR SAILING



Awaits You!

VISITOR/RESIDENT
PROTOCOLS
A COMPREHENSIVE GUIDE

